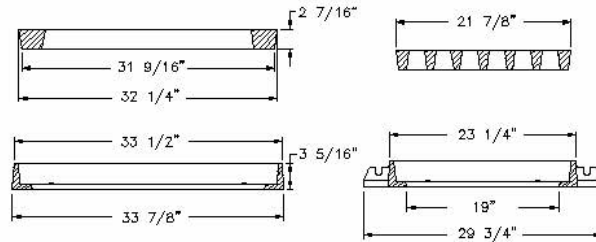


6407 INLET BOX

Heavy duty

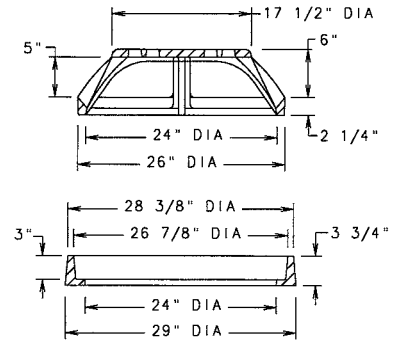
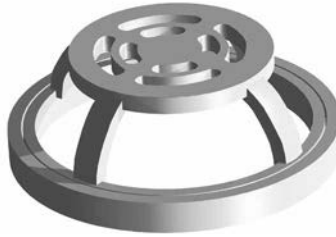
Two frames and grates required per unit

Confirm frame and grate dimensions
before installation**6487 BEEHIVE DITCH GRATE**

Heavy duty

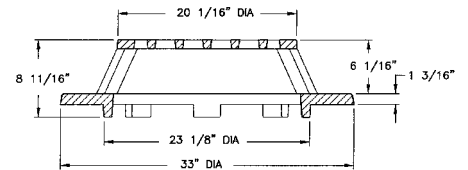
Approximate 430 sq. in. open area

Grate is ductile iron

**6488 BEEHIVE DITCH GRATE**

Heavy duty

Approximate 520 sq. in. open area



Supplied By:

**TRENCHDRAIN
SUPPLY**

877-903-7246

www.trenchdrainsupply.com

